

H A N D C R A F T E D



MCKINNON FOR LIFE

▶ TABLE OF CONTENTS

1	The beauty and care of hardwoods.....	2
2	Care and maintenance of your McKinnon Furniture.....	4
3	Assuring that the cabinet is level.....	6
4	Adjusting the doors.....	8
5	Retractable doors.....	10
6	Drawers.....	12



▶ THE BEAUTY AND CARE OF HARDWOODS


McKinnon Furniture uses several different hardwoods. Because wood is a product of nature, each piece is unique. Some changes and variations in the wood's color are the result of sap and pitch pockets.

American Black Cherry is a hard, straight-grained wood with a fine texture. It is reddish brown to deep red with some brown flecks. It sands to a silky smooth finish.

When first finished, the color has a light golden tone. Due to exposure to light and air, the aging process changes the color to a rich reddish brown. Please remember that the aging process happens quickly and objects on the top surface need to be moved to prevent aging marks. The timeframe varies depending on where the furniture is placed within your home. However, the first several months are the most critical in this regard.



Eastern Maple is sometimes referred to as hardrock maple because of its density. It is very heavy, finely



textured with a straight grain. The sapwood is white and is selected for its light color. Hard maple is abrasion resistant and polishes to a smooth natural finish. As maple ages, the tone changes from a white to a golden tone. The aging process of maple is slower than cherry.

Black Walnut is a strong, durable wood with straight to wavy grain, typically chocolate-brown with darker streaks. It is considered one of the most prized woods.

African Ribbon Mahogany has spectacular grain patterns and rich color variations. Unlike Honduras or Cuban Mahogany, which has become endangered, the African Mahogany is readily available and is harvested sustainably. As with other woods, the aging process means the color will become richer over time.

Lyptus® is produced from a Eucalyptus hybrid that grows in South America on highly productive plantations using sustainable forestry practices. Mature trees are harvested in approximately 15 years using minimally invasive technology. New groves are planted, interspersed among indigenous forests to preserve ecosystems. This wood is harder than Eastern Maple and has a straight grain pattern.

▶ CARE AND MAINTENANCE OF YOUR MCKINNON FURNITURE

Your McKinnon furniture has been finished with a hand rubbed oil finish and top coated with a hand rubbed polyurethane. The oil finish is absorbed into the wood, and will become part of the wood. Dining table tops are coated with a catalyzed conversion varnish, which forms a very hard and durable coating.

Water and heat can be damaging to the finish and the wood. Take care to protect your furniture by using coasters, trivets, place mats, and hot pads at all times. Wipe up any spills immediately.



To care for your furniture, dust regularly with a clean cloth. We have included a bottle of furniture polish which you may use to keep the furniture looking fresh and to cover any hairline scratches. You do not need to polish the furniture on a regular basis. However, if your furniture begins to look dry, you may

use the furniture polish to refresh the finish. This polish may be wiped on with a cotton cloth, and then completely wiped dry. Please do not use commercially available lemon oil or orange oil, as these may harm the finish.



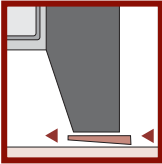
The McKinnon furniture polish may take care of minor scratches and marks. If your furniture becomes damaged, we will be happy to talk to you about the best way to repair the damage.

McKinnon Furniture offers an in-home oil service. For a small fee, our crafts people will come to your home to refresh the finish on your furniture. Please call the woodshop at (206) 768-2484 with any questions about our finish, or to arrange for an in-home oil service.

▶ ASSURING THAT THE
CABINET IS LEVEL



All of our cases - dressers, media cabinets, buffets, etc. - are fitted with doors and drawers on a level, flat surface. The gaps surrounding the doors and drawers are made uniform based on a level cabinet.



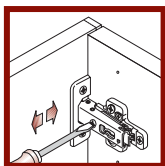
The floors in most homes are not perfectly level. Therefore, it is usually necessary to place a small wedge under one of the rear legs of the cabinet, using a carpenter's level to know when the cabinet is level. After this is done, the doors and drawers will fit perfectly.

If McKinnon Furniture delivers your piece, our delivery service includes making sure the piece sits level and the drawers and doors are working correctly. If you move the piece at any time, it will be necessary for you to level the cabinet again.

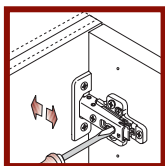
▶ ADJUSTING THE DOORS



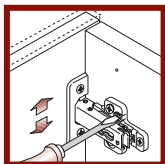
Minor adjustments can be made to the fit of the doors. This should be done only after the cabinet is level. There are three screws on each hinge that are used to adjust the doors up and down, left to right, and in and out. See diagram.



Horizontal
by screw
adjustment



In and Out
by loosening
the hinge-arm
mounting screw



Vertical
via slots in the
mounting plate



▶ RETRACTABLE DOORS

It is very important that the retractable doors be pulled all the way out before closing the doors. Pull each door straight out from the case until it passes the “speed bump”, and then close the door. Failure to extend the doors fully before closing may result in damage to the hinge or to the door.

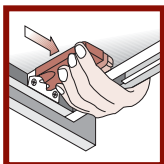
Retractable doors may be adjusted in the same manner as other doors. It is very important to make sure the case is level, because the retractable doors will not operate properly if the case is uneven.



▶ DRAWERS

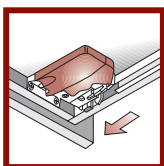


Our drawers are equipped with tandem slides that fit under the drawer. The slides consist of two runners that ride under the drawer bottom, and clip into the locking devices attached to the bottom front of the drawer.



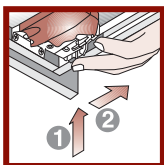
Drawer Removal

To remove the drawer, reach under the drawer and squeeze the two locking devices. This will release the runners, and the drawer can be pulled out.



Drawer Installation

To replace the drawer and lock it in, pull each runner forward into the locking device. You will hear it “click” into place. The drawer will not run smoothly if it is not locked in.



Height Adjustment

The locking device has an adjustment lever to raise or lower the height of the drawer. Press up on the lever, and push forward or back to adjust the height of the drawer.



Showroom

1201 Western Avenue #100
Seattle, WA 98101

206.622.6474 Local

206.622.4217 Fax

showroom@mckinnonfurniture.com

Hours

M-F 10-6

Sat 10-5

Sun 12-5

Woodshop

6520 Fifth Avenue S.
Seattle, WA 98108

206.768.2484 Local

206.768.3081 Fax

mfg@mckinnonfurniture.com

800.532.5461